


Profit and Loss Report for Multiple Months in QuickBooks

When you run the Profit and Loss Standard report in QuickBooks, you get one column of results. This column could be the figures for a given month, quarter or year. But what if you want to see the Profit and Loss report displayed so that each month was side-by-side with the next?

Here's how to make it work:

- Create the Profit and Loss Standard Report (Reports > Company and Financial > Profit and Loss Standard)
- Change the date range in the upper left hand corner to "This Fiscal Year"
- Change the selection in the drop down list that says "Columns" so that it shows Month - it will look like this:



Rock Castle Construction
Profit & Loss
January through December 2011

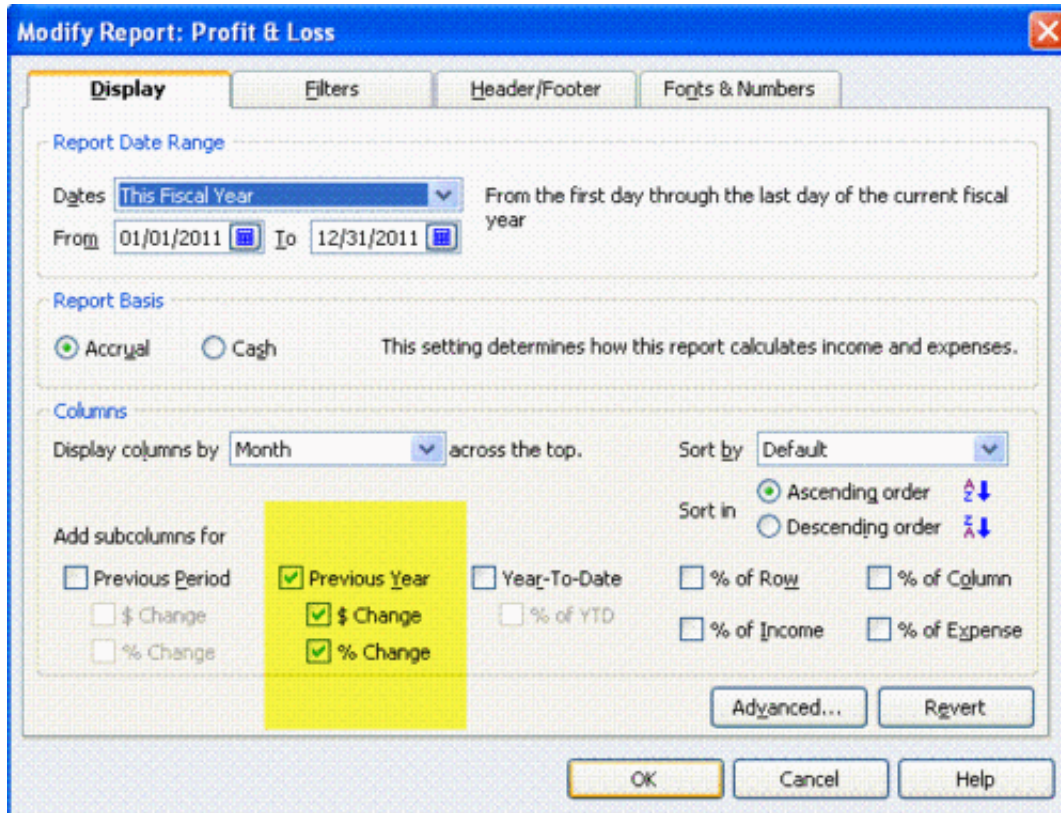
	Jan 11	Feb 11	Mar 11	Apr 11	May 11
Ordinary Income Expense					
Income					
Construction Income					
Design Income	3,000.00	3,150.00	3,300.00	2,700.00	3,750.00
Labor Income	17,229.00	12,420.00	15,116.50	13,855.44	16,838.00
Materials Income	4,118.84	6,539.00	5,269.80	3,577.85	3,930.66
Subcontracted Labor Income	600.00	2,738.00	1,754.95	381.95	1,665.00
Less Discounts given	0.00	0.00	0.00	0.00	0.00
Construction Income - Other	0.00	0.00	0.00	0.00	0.00
Total Construction Income	24,947.84	24,847.00	25,541.25	20,515.24	26,183.66

- Note how the display then puts one month right next to the other.

BONUS TIP:

Using this new report format, **if you would like to compare the current month results to those from the same month last year**, here's how:

- Click Modify Report in the upper left hand corner of the report
- Then select the "Previous Year" option as well as the "\$ Change" and "% Change" options like this:



- The new report will now look like this:

5:12 PM
12/15/11
Accrual Basis

Rock Castle Construction
Profit & Loss
January through December 2011

	Jan 11	Jan 10	\$ Change	% Change
Ordinary Income Expense				
Income				
Construction Income				
Design Income	3,000.00	1,000.00	2,000.00	200.0%
Labor Income	17,229.00	1,175.00	16,054.00	1,366.3%
Materials Income	4,118.84	18,920.24	-14,801.40	-78.2%
Subcontracted Labor Income	600.00	2,910.00	-2,310.00	-79.4%
Less Discounts given	0.00	0.00	0.00	0.0%
Construction Income - Other	0.00	0.00	0.00	0.0%
Total Construction Income	24,947.84	24,005.24	942.60	3.9%